

# **Mombasa Port Area Road Development Project**

## **(1) Background**

Mombasa is fully functioning as the gateway of East Africa and the starting point of logistics along the Northern Economic Corridor leading to the landlocked countries, Uganda, Rwanda, Burundi and South Sudan.

The center of the City of Mombasa is located in the small island and currently expanding outward to the mainland according to increase of population and demand of larger function. Subsequently, traffic capacity becomes a big bottleneck especially at the connecting points between the island and mainland. The ferry service crossing Likoni channel is one and only transport to the southern coast and overwhelmed by huge traffic demand as causes its users to be idle for a long time.

In addition, it is expected that completion of "Mombasa Port Development Project" being financed by Japan will enhance the logistics furthermore.

## **(2) Project Purpose:**

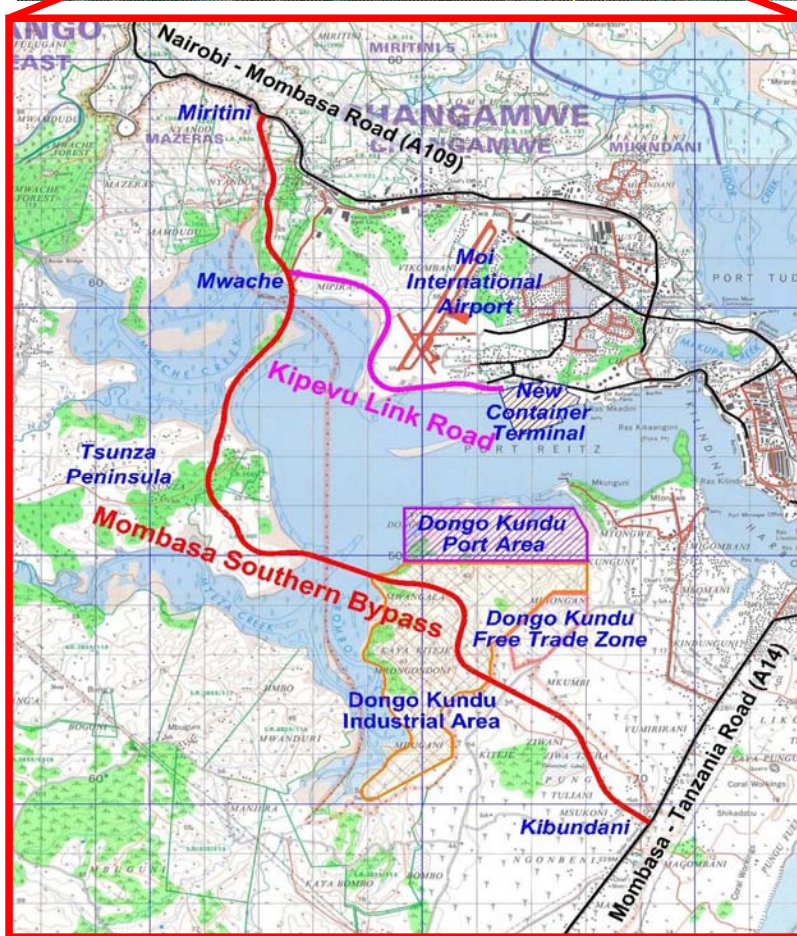
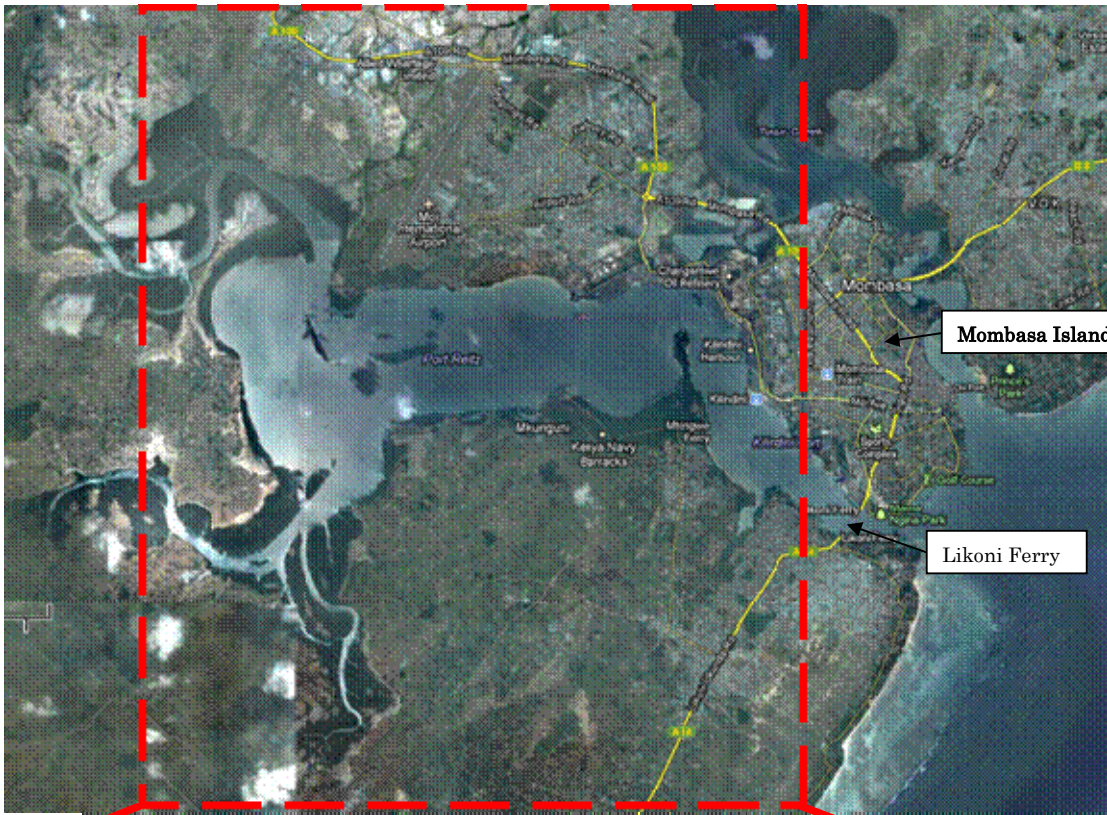
To develop the traffic route to Mombasa South Coast towards Tanzania, alleviate congestion in this area and facilitate the logistics from the new container terminal through development of the Kipevu Link Road and Mombasa Southern Bypass(Dongo Kundu Bypass).

## **(3) Outline of the Project:**

- 1) Project Period  
December 2012 – August 2018
- 2) Loan Amount  
JPY 27,691million
- 3) Loan Condition  
Interest Rate: 1.2% per annum (Consulting services portion: 0.01%)  
Repayment Period: 30 years including 10 year grace period  
Procurement Condition: Untied
- 4) Description of the Project
  - Mombasa Southern Bypass: 19.8km  
Miritini(A109) – Mwache – Tsunza – Dongo Kundu - Kibundani(A14)
  - Kipevu Link Road (5.7km)  
The new container terminal - Mwache
- 5) Implementing Organization: Kenya National Highways Authority (KeNHA)

## **(4) Remarks:**

- The government of Kenya made a request for Japan ODA Loan on construction of the roads in Mombasa in June 2010.
- Dongo Kundu in Mombasa South Coast is the area where is planned to construct free port, thermal power plant etc. in the future.



Map of Mombasa Port Area Road Development Project  
 (The Project is to construct Mombasa Southern Bypass and Kipevu Link Road)